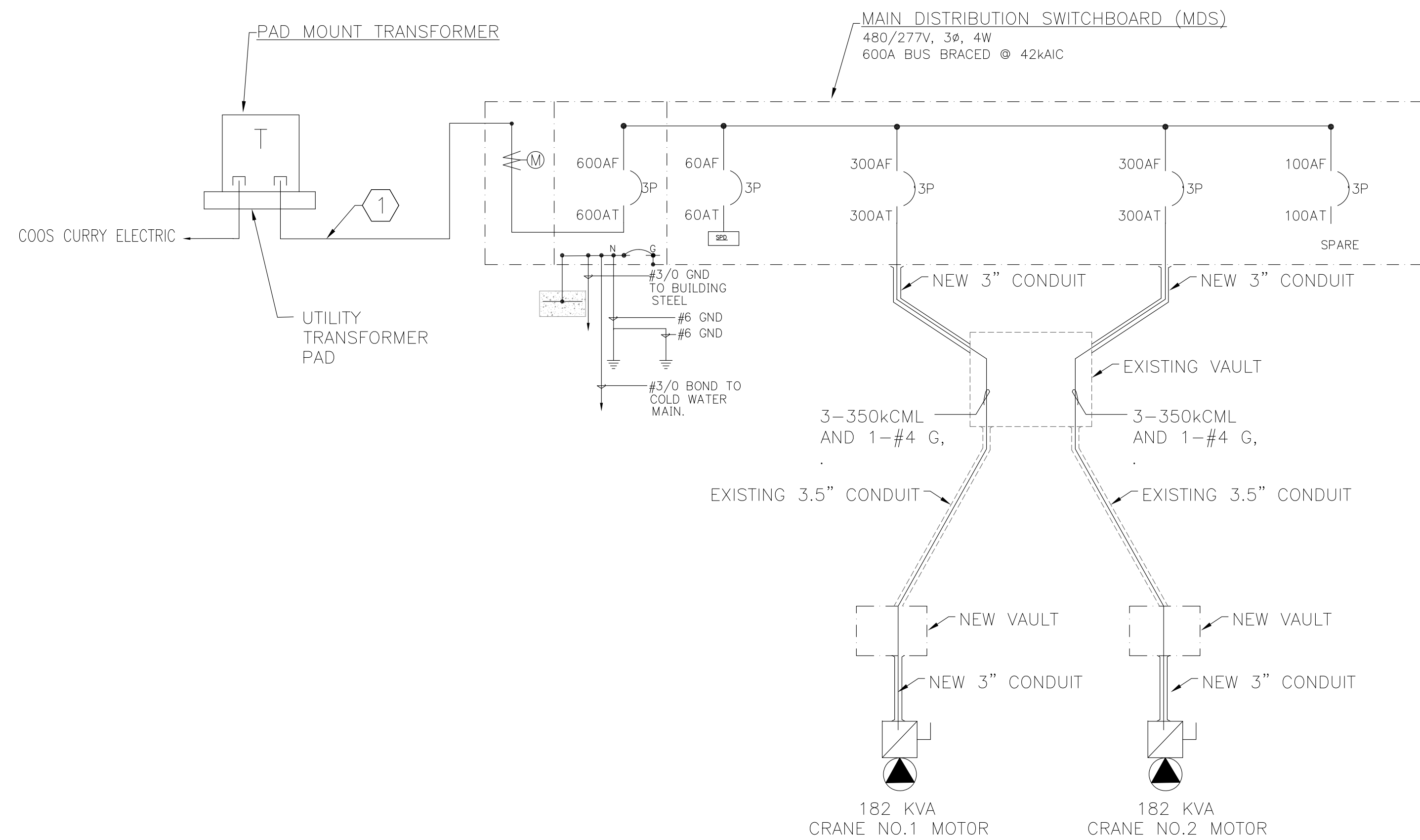


Filename: P:\2023\23-050 Port of Port Orford Crane Replacement\Drawings\Electrical\E-400 Port Orford One Line Diagram.dwg User: Pedro A CAD Plot Date/Time: 2/20/2025 2:45:41 PM



1 ELECTRICAL ONE LINE DIAGRAM
E4.00

Panel Schedule		Phase Voltage: 277		Line-Line Voltage: 480		External Circuit Breaker Serving this Panel		No							
Name:		Bus Ampacity: 600		Main Breaker: 600		Phase: 3 Phase 4 Wire		ISCR: TBD							
Ckt No.	Item	CBA	POLE	PHASE LOADS VA	A	B	C	Ckt No.	Item	CBA	POLE	PHASE LOADS VA	A	B	C
1	Crane #1	300	3	60,412				2	Crane #2	300	3	60,412			
3	Crane #1				60,412			4	Crane #2				60,412		
5	Crane #1						60,412	6	Crane #2						60,412
7	SPD	60	3	0				8	Spare	100	3	0			
9	SPD				0			10	Spare				0		
11	SPD						0	12	Spare						0

A	B	C	Total Phase Loads VA
120,824	120,824	120,824	362,472
436	436	436	Total Phase Loads Line Current
			Total VA

2 PANEL SCHEDULE
E4.00

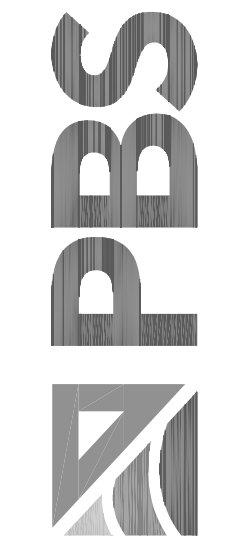
Electrical Load Summary		
Description		Remarks
New Crane #1	181,237 VA	VA
New Crane #2	181,237 VA	VA
125% of the full-load highest Motor NEC	430.24	VA
New Total Loads	407,782 VA	VA
New Total Loads Amperes @ 480-Volts	491 Amperes	Amperes
New Panel Capacity in Amperes	600 Amperes	Amperes
Remain Capacity in the panel	(109) Amperes	Amperes

3 LOAD SUMMARY
E4.00

NOTES THIS SHEET:

- 1 PROVIDE THREE (2) 3-INCH SCHEDULE 40 PVC CONDUIT WITH LONG SWEEP OFFSETS AND ELLS FOR UTILITY PROVIDED AND INSTALLED SECONDARY FEEDER CABLES. INSTALL IN COMPLIANCE WITH PORTLAND COOS CURRY ELECTRIC STANDARDS

PBS Engineering and Environmental Inc.
4412 S Corbett Avenue
Beaverton, OR 97129
503.521.1839
pbsusa.com



ONE LINE POWER RISER DIAGRAM
74353.000 PORT OF PORT ORFORD 50 TON CRANE REPLACEMENT
A SITE LOCATED IN THE CITY OF PORT ORFORD



02/20/2025

DESIGNED: PA
CHECKED: PA
APRIL 25, 2024
74353.000

SHEET ID

E-400

SHEET 18 OF 18

CUNDIFF
ENGINEERING, INC. / CONSULTING ENGINEERS
10700 S.W. BEAVERTON-HILLSDALE HWY. STE 654
BEAVERTON, OREGON 97005
PH 503.521.7260 FX 503.521.7257
PROJECT NUMBER: 23-050